

Overview

The industry for manufactured goods has grown significantly in the past few years owing to increasing demand in the sector. This growth directly influences the machine building business, which is also witnessing an upsurge. Most Machine Building businesses have grown several folds in the recent past. Market optimism and unprecedented market success have increased competition driving prices down. Pressure to keep the growth trends going remains unabated.

As markets mature, the widespread strategy to further the growth is achieved by checking costs, diversifying the product portfolio and M&A activities. However, creating additional value from the machines & manufactured goods themselves, over their lifecycle, remains largely untapped.

Unlocking the value within

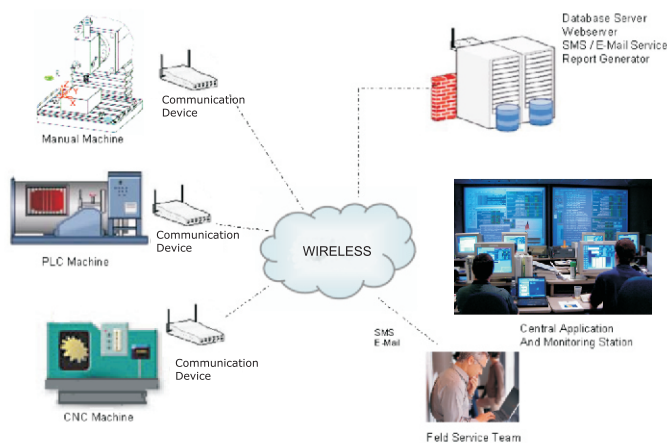
Remote Monitoring and Control of machines unlocks the value residing in the Machines. The buzz words in today's scenario are shorter time-to-market, future viability, flexibility and reduced life-cycle costs. All of these and much more are possible via the remote monitoring and control solution.

With this solution in place, machine builders are able to collect and analyze critical performance data from the machines remotely. Additionally they can reliably preempt machine failure & diagnose the cause thereby in a position to take immediate corrective action before the failure occurs. This enables the field service team with time to prepare man, material and know-how resources. The solution enables one to make an informed decision thus reducing expensive & time consuming site visits.

For the user of the machine the solution provides substantial value by ensuring maximized machine uptime, enhanced machine productivity and increased profits. To the Machine Builder, this is a unique service opportunity delivering enhanced customer satisfaction & retention while improving revenues.

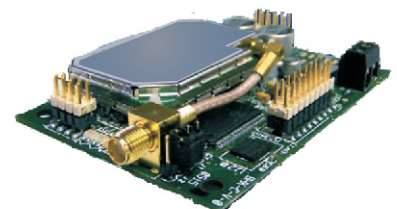
Machine builders, with the help of the remote monitoring and control solution now have real-time data from the field as a vital feedback in the machine design improvement process. This knowledge enables them to cater to and satisfy the increasing end user requirements

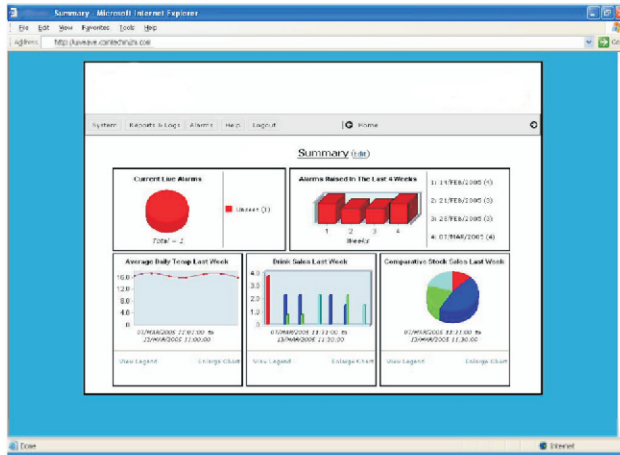
ConnectM Offer



Communication Device

- Serial Interface to Remote Machine via Serial Port
- On-board Real Time Clock to maintain time for scheduling and event logs and initiating communication with Central Application
- Data Logging by Remote machine on non-volatile memory in gateway using serial port commands
- Configurable from Central Software Application
- Integrated TCP/IP protocol and GSM/GPRS modem for communication with Central Application





Central Application

Web based user-friendly application hosted and maintained by ConnectM

Communication: data is communicated to and from remote machines via a wireless network (Internet, GSM/GPRS)

Database: data to and from remote machines is stored in a centrally located database to facilitate monitoring and controlling of the system

Security: Application provides for multiple levels of access authorizations to provide data security

Alarm Processing: the application manages alarms generated by Remote Machines that require intervention. Priorities are assigned based on defined rules.

Notification: Qualified people are notified through E-Mail and/or SMS alerts

Reporting: Data & events are reported in Standard and User configurable templates to provide a consolidated view of Remote Machines installed at varied locations

Optimization: the application compares data from various sites allowing the user to understand site specific issues and optimize overall performance of installed machines

Configuration: the application allows for remote configuration of Machine & Gateway Parameters

ConnectM Services

Consulting Partner for launching Remote Monitoring programs

Hardware and application S/W Design, implementation, Verification and Maintenance (PLC) Partner

End-to-End Solution Provider including Application Hosting and maintenance

ConnectM Customers

OEMs (Machine Builders)

End Users

Industrial Automation supplier